

CO₂ Booster **carbo-Rack**

The **carbo-Rack** series is perfectly suited to the requirements in the retail food segment. By using the environmentally friendly refrigerant CO₂ with a GWP of 1, all cooling requirements can be met safely, efficiently and in compliance with all the applicable standards and laws.

carbo-Rack allows a free combination of compressor racks for LT and MT refrigeration. This allows a high degree of flexibility.

carbo-Rack works with 3 compressors for LT and up to 4 compressors for MT stage. This increases the operational safety and provides better performance levels. For further efficiency improvement, parallel compressors and **c-Ejector** may be utilised.

carbo-Rack comes with a frequency inverter on each main compressor for each pressure stage.

User-friendly

High and medium pressure valves are pre-installed before delivery. This keeps high pressure piping work reduced to a minimum. A redundant valve design ensures maximum service convenience.

The control cabinet, with complete booster and gas cooler control, may be mounted to the left or right side of the machine frame.

Safety

- ✓ Safety valves (120/45/30 bar) on a stainless steel panel for outdoor assembly.
- ✓ A well-sized liquid receiver ensures safe operation throughout the year.

carbo-Rack PLUS – Accessories:

- ✓ Container / housing / sound-proof enclosure
- ✓ gas cooler separate or installed
- ✓ heat recovery system with speed-controlled efficiency pump
- ✓ parallel compression
- ✓ ejector, emergency cooling

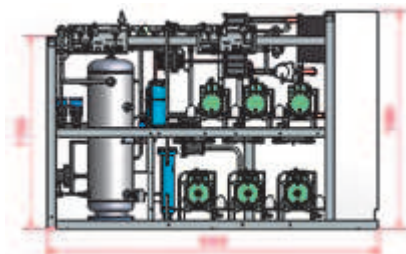


Technical data

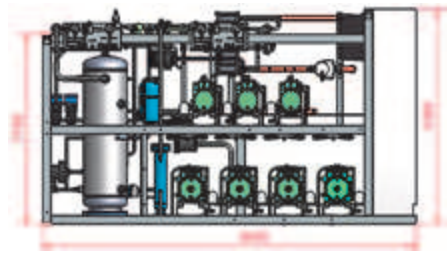
	†carbo-Rack with flash gas bypass LT at -30 / -5°C, to,h = 24K MT at -5 / 36°C, to,h = 16K		†carbo-Rack with flash gas parallel system LT at -38/-8°C MT at -8/38°C
	†carbo-Rack 33	†carbo-Rack 34	†carbo-Rack 342
Low temperature	3 compressors	3 compressors	3 compressors
Cooling capacity Compr.	9 kW – 25 kW	9 kW – 25 kW	15 kW – 88 kW
Condensing capacity	Max. 29 kW	Max. 29 kW	Max. 110 kW
Medium temperature	3 compressors	4 compressors	4 compressors + 2 parallel compressors
Cooling capacity Compr.	27 kW – 74 kW	45 kW – 110 kW	40 kW – 163 kW
Gas cooler capacity	Max. 128 kW	Max. 182 kW	Max. 310 kW
Max. Operating current	Max. 95 A	Max. 138 A	Max. 311 A
Liquid Receiver	125 l	150 l	125 l – 200 l
Length	3000 mm	3750 mm	4900 mm
Width	800 mm	1000 mm	1150 mm
Height	2080 mm	2080 mm	2080 mm
Weight	Max. 2000 kg	Max. 2250 kg	Max. 3500 kg

Sketch / Dimensions:

†carbo-Rack 33



†carbo-Rack 34



†carbo-Rack 342

